

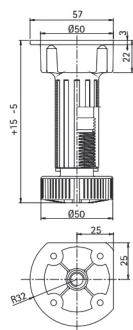
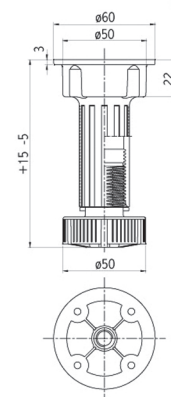


Solidna podstawa:
Atest do 400kg

Nóżki meblowe

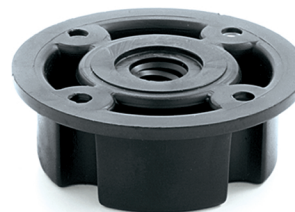
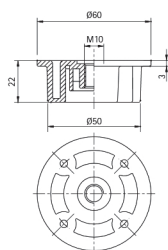
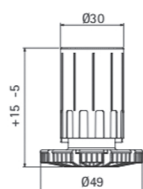
Nóżka (atest 400kg)

| Kod towaru | Wysokość | Ilość w kartonie |
|------------|----------|------------------|
| 10/02.1105 | 100 mm | 300 szt |
| 10/02.1125 | 120 mm | 250 szt |
| 10/02.1155 | 150 mm | 200 szt |



Nóżka (atest 400kg)

| Kod towaru | Ilość w kartonie |
|------------|------------------|
| 10/S3.A100 | 300 szt |

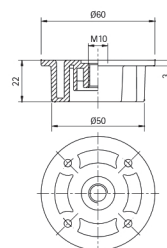
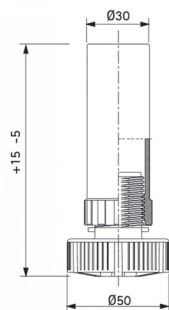


Nóżka z tubą seria D (atest 400kg)

| Kod towaru | Wysokość | Ilość w kartonie |
|------------|----------|------------------|
| 10/04.D060 | 60 mm | 300 szt |
| 10/04.D080 | 80 mm | 300 szt |
| 10/04.D100 | 100 mm | 300 szt |

◀ Element do nóżki z tubą

| Kod towaru | Ilość w kartonie |
|------------|------------------|
| 10/05.0251 | 400 szt |



Nóżka z tubą (atest 400kg)

| Kod towaru | Wysokość | Ilość w kartonie |
|------------|----------|------------------|
| 10/04.A080 | 80 mm | 400 szt |
| 10/04.A100 | 100 mm | 400 szt |
| 10/04.A150 | 150 mm | 200 szt |

◀ Element do nóżki z tubą

| Kod towaru | Ilość w kartonie |
|------------|------------------|
| 10/05.0251 | 400 szt |